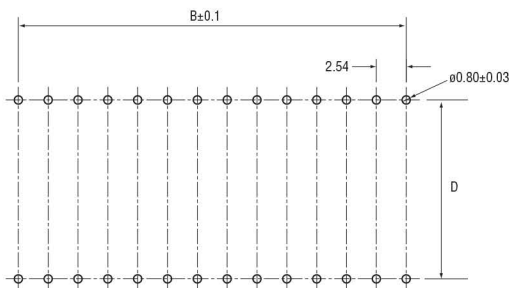
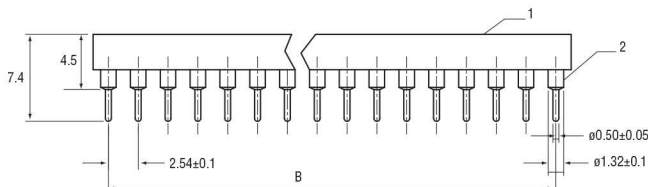
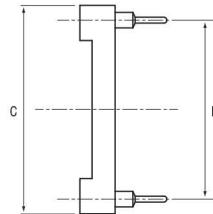
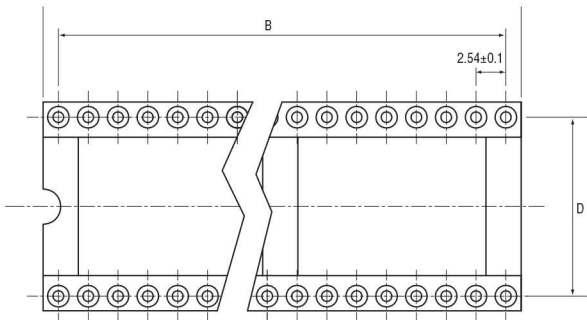


**NOTES**

1. Electrical Characteristics:
  - 1.1 Contact resistance: 20mΩ Max.
  - 1.2 Dielectric withstanding voltage: 500V AC for 1 minute
  - 1.3 Insulation resistance: 1000MΩ Min.
2. Environment characteristics:
  - 2.1 Operating temperature: 0°C to +85°C
  - 2.2 Storage temperature: -20°C to +70°C



Recommend PCB Layout (Tolerance=±0.05)

Item	Part Name	Materials	Finished
1	Housing	Thermoplastic	UL 94 V - 0
2	Contact	Copper alloy	Gold plated

Position	Dimensions			
	A±0.5	B±0.3	C	D±0.2
08	10.16	7.62	10.16	7.62
14	17.78	15.24	10.16	7.62
16	20.32	17.78	10.16	7.63
18	22.86	20.32	10.16	7.62
20	25.40	22.86	10.16	7.62
24	30.48	27.94	10.16	7.62
28	35.56	33.02	10.16	7.62
24	30.48	27.94	17.78	15.24
28	35.56	33.02	17.78	15.24
32	40.64	38.10	17.78	15.24
40	50.80	48.26	17.78	15.24



**Sherwood Electronics Ltd**

Units 1-2 Wilsthorpe Road  
 Long Eaton, Nottingham, NG10 3JW  
 Tel No.: 0115 972 0100 Fax No.: 0115 972 1900  
 E-Mail: sales@sherwoodelectronics.co.uk  
 Web: www.sherwoodelectronics.co.uk

